

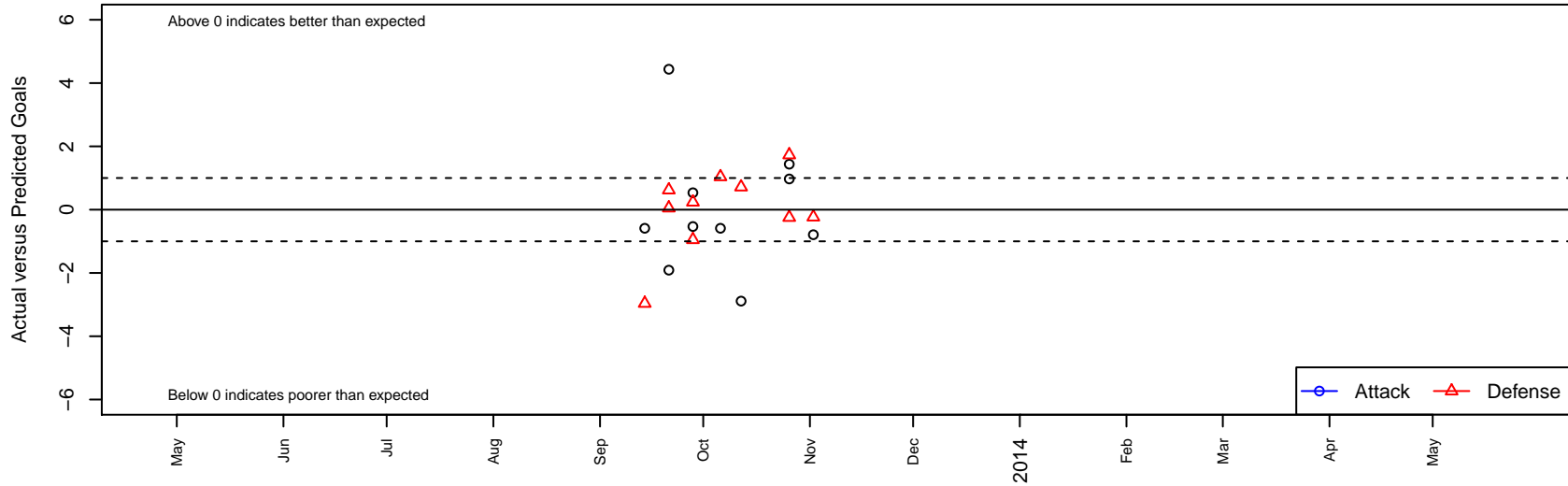
Pullman Pumas G02

Venues played:
DVI GU11 Reebok U11

G02 total strength=281
 attack=0.13 defense=0.21
 fall league = DVI GU11 Reebok U11
 alt names used:
 PULLMAN PUMAS GU11



Pullman Pumas G02
 Dots are actual minus expected GF (blue circles) and GA (red triangles).
 Blue line is smoothed change in attack strength. Red is smoothed change in defense strength.



| | date | home | | away | | venue | pred.home | pred.away |
|------|-------------|------------------------------|----|-----------------------------------|---|---------------------|------------------|------------------|
| 2509 | 2013-11-02 | Pullman Pumas G02 | 1 | Columbia Basin YSA Dominators G02 | 1 | DVI GU11 Reebok U11 | 1.79 | 0.765 |
| 2371 | 2013-10-26 | Three Rivers -Unk G02 | 1 | Pullman Pumas G02 | 3 | DVI GU11 Reebok U11 | 0.75 | 1.562 |
| 2374 | 2013-10-26 | BMSC G02 | 0 | Pullman Pumas G02 | 2 | DVI GU11 Reebok U11 | 1.73 | 1.029 |
| 2065 | 2013-10-12 | Pullman Pumas G02 | 1 | CB United G02 | 0 | DVI GU11 Reebok U11 | 3.89 | 0.715 |
| 1981 | 2013-10-06 | Pullman Pumas G02 | 2 | SSC Shadow Elite Sennott G02 | 0 | DVI GU11 Reebok U11 | 2.59 | 1.038 |
| 1708 | 2013-09-28 | SSC Shadow Wambach G02 | 2 | Pullman Pumas G02 | 2 | DVI GU11 Reebok U11 | 1.05 | 1.465 |
| 1712 | 2013-09-28 | SSC Shadow Morgan G02 | 0 | Pullman Pumas G02 | 4 | DVI GU11 Reebok U11 | 0.24 | 4.533 |
| 1549 | 2013-09-21 | Pullman Pumas G02 | 10 | SSC Shadow United Heath G02 | 0 | DVI GU11 Reebok U11 | 5.56 | 0.052 |
| 1553 | 2013-09-21 | Pullman Pumas G02 | 1 | SSC Shadow United Rapinoe G02 | 0 | DVI GU11 Reebok U11 | 2.91 | 0.621 |
| 1381 | 2013-09-14 | SSC Shadow Elite Sennott G02 | 4 | Pullman Pumas G02 | 2 | DVI GU11 Reebok U11 | 1.04 | 2.588 |